

WHE SA 10 SERIES SURGE ARRESTER



Features

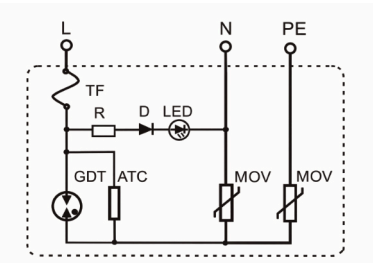
A protective device used to safeguard LED lighting equipment and its power supply system from damage caused by lightning strikes or grid surges (sudden voltage changes). It is mainly used to absorb or discharge instantaneous over-voltage and overcurrent, ensuring the safe and stable operation of LED lamps, driver power supplies, and related circuits. Meet the lightning protection test requirements of reference Standard: IEC61643.11-2011 Section 8.3.3.3.

- Compact and easy to install
- High surge current absorption and multi-level protection design
- Fast response time
- Outdoor type IP67 protection grade

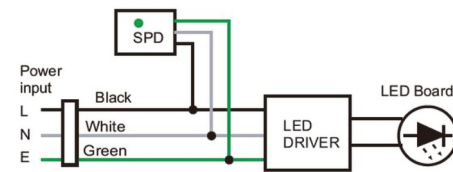
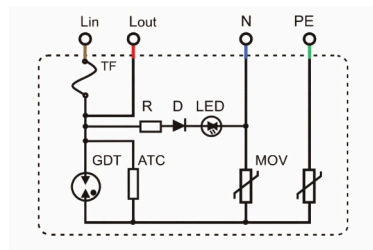
Dimensions and Circuit Diagrams



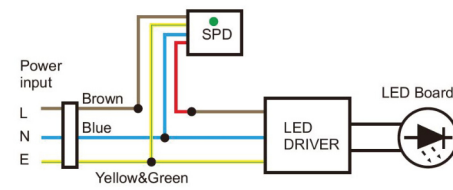
Dimensions



Schematic Diagram



Wiring diagram



WOLTIFY MODEL	WHE SA 10 S	WHE SA 10 P
SPD according to EN 61643-11 / IEC 61643-11		type 2/class II
Energy coordination with terminal equipment (≤ 10 m)		type 2 + type 3
Nominal Voltage (a.c.) Un		230V AC
Voltage Protection Level (L-N) Up		≤1.5 kV
Voltage Protection Level (N-PE) Up		≤1.5 kV
Maximum Continuous Operating Voltage (L-N) Uc		275V AC*
Maximum Continuous Operating Voltage (N-PE) Uc		255V AC
Surge Voltage Uoc		10 kV
Nominal Discharge Current In		5 kA
Maximum Discharge Current Imax		10 kA
Response Time		<25ns
Follow Current Extinguishing Capability [N-PE] Ifi		100Arms
Max. load current ILMax. load current IL		10 A
Short-circuit withstand capability for mains-side overcurrent protection Isccr		1 kArms
Interface/Connection Type	4-Wire / Series Use	3-Wire / Parallel Use
Ingress Protection		IP67
Flame Rating		UL 94-V0
Relative Humidity		<95%
Working Altitude		<5000m
Operating Temperature Range		-40 to +80°C
Storage Temperature Range		-40 to +125°C
Size		32*32*18mm (L*H*W)
Voltage Protection Level at 3 kA (L-N) Up		≤1 kV
Voltage Protection Level at 1.5 kA (L-N) Up		≤0.85 kV
Response Time (L/N-PE)		≤100 ns
Total Discharge Current Isum		10kV/20kV
Max. mains-side overcurrent protection		16A
Short-circuit withstand capability with 16 A gG		6KA
Temporary over-voltage (TOV) [L-N] - withstand		335V / 5 sec - withstand
Temporary over-voltage (TOV) [L-N] - safe failure		440V / 120 min - safe failure
Temporary over-voltage (TOV) [N-PE] - safe failure		1200V / 200 ms - safe failure
Fault indication		Red or Green (Customisable as per client request)
Interruption of the load circuit in the event of a fault		Yes
Weight		39 gms
Connecting wires		1.5 mm ² , 60 mm long

*Also available in Uc 320V