



IP65 Distribution Box

Woltify Herald series distribution box use high-quality fire-resistant and ABS materials reach IP65 protection. Can be used in outdoor environments to protect against harsh weather.

Protection rating:	IP65	Material:	Polycarbonate/ABS		
Bus-bar:	Brass bar optional	Flame Retardant:	UI94 V-0		
Type:	4-way	8-way	12-way	18-way	26-way
Size(mm):	143*211*100	215*209*98	298*259*140	411*287*138	324*420*140

WHE DIB PV 11 IO 600 D



Protection Rating:	IP65	Default Fuse:	15A DC1000V
Optional Fuse:	20/25/30/32A	Max operation Voltage:	600V
Number Of Inverter MPPTs:	1	Connector:	MC4 input/Cable Gland output
Output Strings:	1	Lightning Protection:	20-40kA 5/20µs
Max input string:	1	Main Switch:	DC MCB (Isolator Switch optional)
Enclosure Box:	6-way for MCB main switch or 8-way for isolator main switch		

WHE DIB PV 11 IO 1000 D



Protection Rating:	IP65	Default Fuse:	15A DC1000V
Optional Fuse:	20/25/30/32A	Max operation Voltage:	1000V
Number Of Inverter MPPTs:	1	Connector:	MC4 input/Cable Gland output
Output Strings:	1	Lightning Protection:	20-40kA 5/20µs
Max input string:	1	Main Switch:	DC MCB (Isolator Switch optional)
Enclosure Box:	12-way		

WHE DIB PV 21 IO 600 D



Protection Rating:	IP65	Default Fuse:	15A DC1000V
Optional Fuse:	20/25/30/32A	Max operation Voltage:	600V
Number Of Inverter MPPTs:	1	Connector:	MC4 input/Cable Gland output
Output Strings:	1	Lightning Protection:	20-40kA 5/20µs
Max input string:	1	Main Switch:	DC MCB (Isolator Switch optional)
Enclosure Box:	12-way		

WHE DIB PV 21 IO 1000 D



Protection Rating:	IP65	Default Fuse:	15A DC1000V
Optional Fuse:	20/25/30/32A	Max operation Voltage:	1000V
Number Of Inverter MPPTs:	1	Connector:	MC4 input/Cable Gland output
Output Strings:	1	Lightning Protection:	20-40kA 5/20µs
Max input string:	1	Main Switch:	DC MCB (Isolator Switch optional)
Enclosure Box:	12-way		



WHE DIB PV 21 IO 600 D

Protection Rating:	IP65	Default Fuse:	15A DC1000V
Optional Fuse:	20/25/30/32A	Max operation Voltage:	600V
Number Of Inverter MPPTs:	2	Connector:	MC4 input/Cable Gland output
Output Strings:	2	Lightning Protection:	20-40kA 5/20µs
Max input string:	2	Main Switch:	DC MCB (Isolator Switch optional)
Enclosure Box:	12-way		



WHE DIB PV 21 IO 1000 D

Protection Rating:	IP65	Default Fuse:	15A DC1000V
Optional Fuse:	20/25/30/32A	Max operation Voltage:	1000V
Number Of Inverter MPPTs:	2	Connector:	MC4 input/Cable Gland output
Output Strings:	2	Lightning Protection:	20-40kA 5/20µs
Max input string:	2	Main Switch:	DC MCB (Isolator Switch optional)
Enclosure Box:	12-way		



WHE DIB PV 31 IO 600 D

Protection Rating:	IP65	Default Fuse:	15A DC1000V
Optional Fuse:	20/25/30/32A	Max operation Voltage:	600V
Number Of Inverter MPPTs:	1	Connector:	MC4 input/Cable Gland output
Output Strings:	1	Lightning Protection:	20-40kA 5/20µs
Max input string:	3	Main Switch:	DC MCB (Isolator Switch optional)
Enclosure Box:	12-way		



WHE DIB PV 31 IO 1000 D

Protection Rating:	IP65	Default Fuse:	15A DC1000V
Optional Fuse:	20/25/30/32A	Max operation Voltage:	1000V
Number Of Inverter MPPTs:	1	Connector:	MC4 input/Cable Gland output
Output Strings:	1	Lightning Protection:	20-40kA 5/20µs
Max input string:	3	Main Switch:	DC MCB (Isolator Switch optional)
Enclosure Box:	12-way		



WHE DIB PV 41 IO 600 D

Protection Rating:	IP65	Default Fuse:	15A DC1000V
Optional Fuse:	20/25/30/32A	Max operation Voltage:	550V
Number Of Inverter MPPTs:	1	Connector:	MC4 input/Cable Gland output
Output Strings:	1	Lightning Protection:	20-40kA 5/20µs
Max input string:	4	Main Switch:	DC MCB 2P 100A DC550V
Enclosure Box:	18-way		



WHE DIB PV 4I 1O 1000 D			
Protection Rating:	IP65	Default Fuse:	15A DC1000V
Optional Fuse:	20/25/30/32A	Max operation Voltage:	1000V
Number Of Inverter MPPTs:	1	Connector:	MC4 input/Cable Gland output
Output Strings:	1	Lightning Protection:	20-40kA 5/20µs
Max input string:	4	Main Switch:	DC MCB 4P 100A DC1000V
Enclosure Box:	18-way		



WHE DIB PV 4I 2O 600 D			
Protection Rating:	IP65	Default Fuse:	15A DC1000V
Optional Fuse:	20/25/30/32A	Max operation Voltage:	600V
Number Of Inverter MPPTs:	2	Connector:	MC4 input/Cable Gland output
Output Strings:	2	Lightning Protection:	20-40kA 5/20µs
Max input string:	4	Main Switch:	DC MCB (Isolator Switch optional)
Enclosure Box:	18-way		



WHE DIB PV 4I 2O 1000 D			
Protection Rating:	IP65	Default Fuse:	15A DC1000V
Optional Fuse:	20/25/30/32A	Max operation Voltage:	1000V
Number Of Inverter MPPTs:	2	Connector:	MC4 input/Cable Gland output
Output Strings:	2	Lightning Protection:	20-40kA 5/20µs
Max input string:	4	Main Switch:	DC MCB (Isolator Switch optional)
Enclosure Box:	12-way		



WHE DIB PV 4I 4O 600 D			
Protection Rating:	IP65	Default Fuse:	15A DC1000V
Optional Fuse:	20/25/30/32A	Max operation Voltage:	600V
Number Of Inverter MPPTs:	4	Connector:	MC4 input/Cable Gland output
Output Strings:	4	Lightning Protection:	20-40kA 5/20µs
Max input string:	4	Main Switch:	DC MCB 2P 32A DC600V (Default)
Enclosure Box:	26-way		



WHE DIB PV 4I 4O 1000 D			
Protection Rating:	IP65	Default Fuse:	15A DC1000V
Optional Fuse:	20/25/30/32A	Max operation Voltage:	1000V
Number Of Inverter MPPTs:	4	Connector:	MC4 input/Cable Gland output
Output Strings:	4	Lightning Protection:	20-40kA 5/20µs
Max input string:	4	Main Switch:	DC MCB 2P 32A DC1000V (Default)
Enclosure Box:	26-way		



WHE DIB PV 6I 2O 600 D			
Protection Rating:	IP65	Default Fuse:	15A DC1000V
Optional Fuse:	20/25/30/32A	Max operation Voltage:	600V
Number Of Inverter MPPTs:	2	Connector:	MC4 input/Cable Gland output
Output Strings:	2	Lightning Protection:	20-40kA 5/20µs
Max input string:	6	Main Switch:	DC MCB (Isolator Switch optional)
Enclosure Box:	26-way		



WHE DIB PV 6I 2O 1000 D			
Protection Rating:	IP65	Default Fuse:	15A DC1000V
Optional Fuse:	20/25/30/32A	Max operation Voltage:	1000V
Number Of Inverter MPPTs:	2	Connector:	MC4 input/Cable Gland output
Output Strings:	2	Lightning Protection:	20-40kA 5/20µs
Max input string:	6	Main Switch:	DC MCB (Isolator Switch optional)
Enclosure Box:	26-way		



WHE DIB PV 1I 1O 1000 D			
Protection Rating:	IP65	Default Breaker:	20A DC1000V
Optional Breaker:	20/25/30/32A	Max operation Voltage:	600/1000V
Number Of Inverter MPPTs:	1	Connector:	MC4 input/Cable Gland output
Output Strings:	1	Lightning Protection:	20-40kA 5/20µs
Max input string:	1	Main Switch:	DC MCB (Isolator Switch optional)
Enclosure Box:	4-way for 600V and 8-way for 1000V		



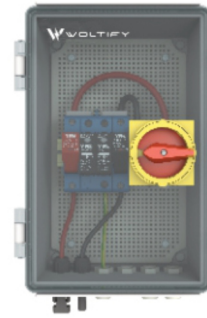
WHE DIB PV 2I 2O 1000 D			
Protection Rating:	IP65	Default Breaker:	20A DC600/1000V
Optional Breaker:	20/25/30/32A	Max operation Voltage:	600/1000V
Number Of Inverter MPPTs:	2	Connector:	MC4 input/Cable Gland output
Output Strings:	2	Lightning Protection:	20-40kA 5/20µs
Max input string:	2	Enclosure Box:	8-way for 600V and 18-way for 1000V



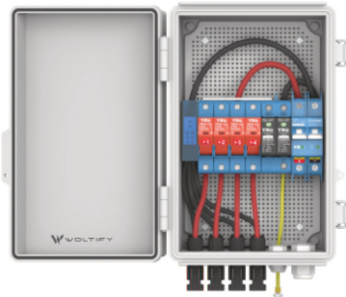
WHE DIB PV 3I 3O 1000 D			
Protection Rating:	IP65	Default Breaker:	20A DC600/1000V
Optional Breaker:	20/25/30/32A	Max operation Voltage:	600/1000V
Number Of Inverter MPPTs:	3	Connector:	MC4 input/Cable Gland output
Output Strings:	3	Lightning Protection:	20-40kA 5/20µs
Max input string:	3	Enclosure Box:	12-way for 600V and 26-way for 1000V



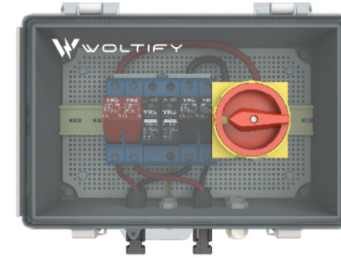
WHE DIB PV 4I 4O 1000 D			
Protection Rating:	IP65	Default Breaker:	20A DC600/1000V
Optional Fuse:	20/25/30/32A	Max operation Voltage:	600/1000V
Number Of Inverter MPPTs:	4	Connector:	MC4 input/Cable Gland output
Output Strings:	4	Lightning Protection:	20-40kA 5/20µs
Max input string:	4	Enclosure Box:	26-way



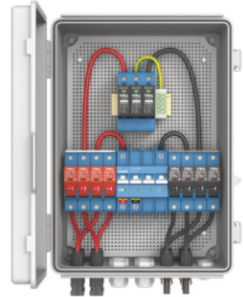
WHE DIB PV II 1O 1000 D			
Protection Rating:	IP65	Default Fuse:	15A DC1000V
Optional Fuse:	20/25/30/32A	Max operation Voltage:	1000V
Number Of Inverter MPPTs:	1	Connector:	MC4 input/Cable Gland output
Output Strings:	1	Lightning Protection:	20-40kA 5/20µs
Max input string:	1	Main Switch:	DC Isolator Switch 2P 40A 1000V



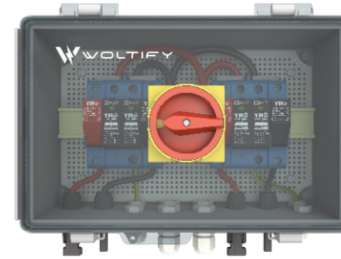
WHE DIB PV 4I 1O 600 D			
Protection Rating:	IP65	Default Fuse:	15A DC1000V
Optional Fuse:	20/25/30/32A	Max operation Voltage:	600V
Number Of Inverter MPPTs:	1	Connector:	MC4 input/Cable Gland output
Output Strings:	1	Lightning Protection:	20-40kA 5/20µs
Max input string:	4	Main Switch:	DC MCB 2P 63A 600V



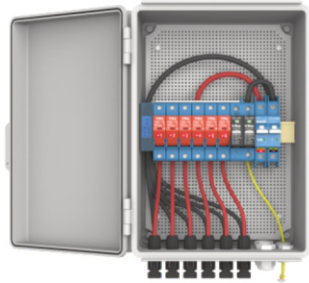
WHE DIB PV 2I 1O 1000 D			
Protection Rating:	IP65	Default Fuse:	15A DC1000V
Optional Fuse:	20/25/30/32A	Max operation Voltage:	1000V
Number Of Inverter MPPTs:	1	Connector:	MC4 input/Cable Gland output
Output Strings:	1	Lightning Protection:	20-40kA 5/20µs
Max input string:	2	Main Switch:	DC Isolator Switch 2P 40A 1000V



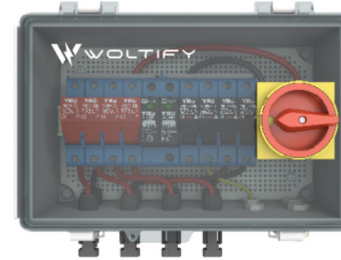
WHE DIB PV 4I 1O 1000 D			
Protection Rating:	IP65	Default Fuse:	15A DC1000V
Optional Fuse:	20/25/30/32A	Max operation Voltage:	1000V
Number Of Inverter MPPTs:	1	Connector:	MC4 input/Cable Gland output
Output Strings:	1	Lightning Protection:	20-40kA 5/20µs
Max input string:	4	Main Switch:	DC MCB 4P 63A 1000V



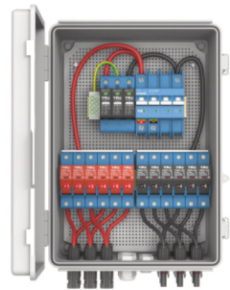
WHE DIB PV 2I 2O 1000 D			
Protection Rating:	IP65	Default Fuse:	20A DC1000V
Optional Fuse:	20/25/30/32A	Max operation Voltage:	1000V
Number Of Inverter MPPTs:	2	Connector:	MC4 input/Cable Gland output
Output Strings:	2	Lightning Protection:	20-40kA 5/20µs
Max input string:	2	Main Switch:	DC Isolator Switch 2P 40A 1000V



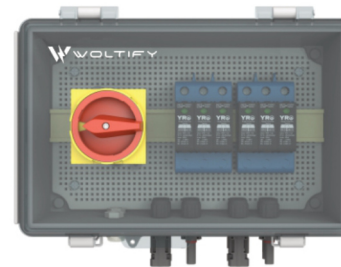
WHE DIB PV 6I 1O 600 D			
Protection Rating:	IP65	Default Fuse:	15A DC1000V
Optional Fuse:	20/25/30/32A	Max operation Voltage:	600V
Number Of Inverter MPPTs:	1	Connector:	MC4 input/Cable Gland output
Output Strings:	1	Lightning Protection:	20-40kA 5/20µs
Max input string:	6	Main Switch:	DC MCB 2P 63A DC600V



WHE DIB PV 4I 1O 1000 D			
Protection Rating:	IP65	Default Fuse:	20A DC600/1000V
Optional Breaker:	20/25/30/32A	Max operation Voltage:	1000V
Number Of Inverter MPPTs:	1	Connector:	MC4 input/Cable Gland output
Output Strings:	1	Lightning Protection:	20-40kA 5/20µs
Max input string:	4	Main Switch:	DC Isolator Switch 4P 55A 1000V



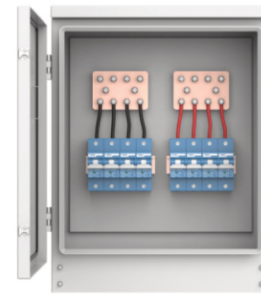
WHE DIB PV 6I 1O 1000 D			
Protection Rating:	IP65	Default Fuse:	15A DC1000V
Optional Fuse:	20/25/30/32A	Max operation Voltage:	1000V
Number Of Inverter MPPTs:	1	Connector:	MC4 input/Cable Gland output
Output Strings:	1	Lightning Protection:	20-40kA 5/20µs
Max input string:	6	Main Switch:	DC MCB 4P 63A DC1000V



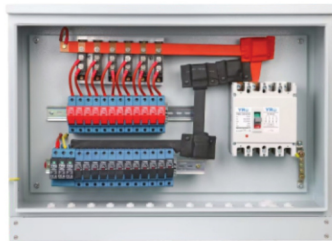
WHE DIB PV 2I 2O 1000 D			
Protection Rating:	IP65	Max operation Voltage:	1000V
Number Of Inverter MPPTs:	2	Connector:	MC4 input/Cable Gland output
Output Strings:	2	Lightning Protection:	20-40kA 5/20µs
Max input string:	2	Main Switch:	DC Isolator Switch 4P 40A 1000V



WHE DIB PV 6I 10 1000 D			
Protection Rating:	IP65	Default Fuse:	15A DC1000V
Optional Fuse:	20/25/30/32A	Max operation Voltage:	1000V
Number Of Inverter MPPTs:	1	Connector:	MC4 input/Cable Gland output
Output Strings:	1	Lightning Protection:	20-40kA 5/20µs
Max input string:	6	Main Switch:	WHE3DC-320HU 2P 160A DC1000V Iron Box



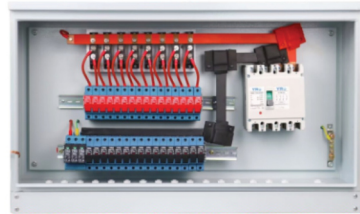
WHE DIB BAT 4I XO 600 D			
Max Input Current:	125A	Battery Fuse:	160A DC60V
Charge & Discharge Current:	<104A	Max Output Current:	500V
Enclosure Material:	Iron/ABS (optional)	Protection Rating:	IP65
Output Strings:	2	Lightning Protection:	20-40kA 5/20µs
Input & Output	Down input & output default; Top input & output optional		
Type code "x" stands for output number:	1-10 output screws available		
Breaker used:	WHE7-125DC IP 125A DC250V		



WHE DIB PV 12I 10 1000 D			
Protection Rating:	Diode with Aluminium heat sink	Default Fuse:	15A DC1000V
Optional Fuse:	20/25/30/32A	Max operation Voltage:	1000V
Number Of Inverter MPPTs:	1	Connector:	MC4 input/Cable Gland output
Output Strings:	1	Lightning Protection:	20-40kA 5/20µs
Max input string:	12	Main Switch:	WHE3DC-320HU 2P 200A DC1000V Iron Box



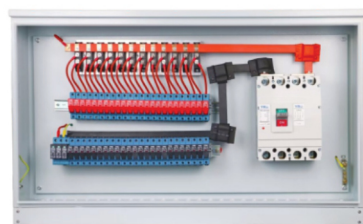
WHE DIB BAT 1I XO 600 D			
Max Input Current:	320A	Max Output Current:	320A
Charge & Discharge Current:	<260A	Input Voltage:	<1000Vdc
Enclosure Material:	Iron/ABS (optional)	Protection Rating:	IP65
Input & Output	Down input & output default; Top input & output optional		
Type code "x" stands for output number:	1-10 output screws available		
Breaker used:	WHE3DC-320HU 2P 320A DC1000V		



WHE DIB PV 16I 10 1000 D			
Protection Rating:	Diode with Aluminium heat sink	Default Fuse:	15A DC1000V
Optional Fuse:	20/25/30/32A	Max operation Voltage:	1000V
Number Of Inverter MPPTs:	1	Connector:	MC4 input/Cable Gland output
Output Strings:	1	Lightning Protection:	20-40kA 5/20µs
Max input string:	16	Main Switch:	WHE3DC-320HU 2P 250A DC1000V Iron Box



WHE DIB BAT 2I XO 600 D			
Max Input Current:	320A	Max Output Current:	320A
Charge & Discharge Current:	<260A	Input Voltage:	<1000Vdc
Enclosure Material:	Iron/ABS (optional)	Protection Rating:	IP65
Input & Output	Down input & output default; Top input & output optional		
Type code "x" stands for output number:	1-10 output screws available		
Breaker used:	WHE3DC-320HU 2P 320A DC1000V		



WHE DIB PV 24I 10 1000 D			
Protection Rating:	Diode with Aluminium heat sink	Default Fuse:	15A DC1000V
Optional Fuse:	20/25/30/32A	Max operation Voltage:	1000V
Number Of Inverter MPPTs:	1	Connector:	MC4 input/Cable Gland output
Output Strings:	1	Lightning Protection:	20-40kA 5/20µs
Max input string:	24	Main Switch:	WHE3DC-320HU 2P 400A DC1000V Iron Box



WHE DIB II 10 600 X			
AC Breaker:	2P 32A MCB for 7kw (Default); 2P 63A MCB for 14kw (Optional)		
AC SPD:	2P 20-40kA 275V~	Phase:	Single Phase
Default Breaker:	15A DC1000V	Optional Breaker:	20/25/30/32A
Max Operation Voltage:	600V	Number Of Inverter MPPTs:	1
Connector:	Cable Gland input & output	Output strings:	1
Lightning Protection:	20-40kA 5/20µs	Max input string:	1



WHE DIB BAT II 10 1000 D			
Battery Fuse:	160A DC60V	Default Fuse:	15A DC1000V
Optional Fuse:	20/25/30/32A	Max operation Voltage:	1000V
Number Of Inverter MPPTs:	1	Connector:	MC4 input/Cable Gland output
Output Strings:	1	Lightning Protection:	20-40kA 5/20µs
Max input string:	1	Main Switch:	WHEIDB/N32/4 4P 32A DC1000V Isolator switch



WHE DIB 2I 2O 600 X			
AC Breaker:	2P 32A MCB for 7kw (Default); 2P 63A MCB for 14kw (Optional)		
AC SPD:	2P 20-40kA 275V~	Phase:	Single Phase
Default Breaker:	15A DC1000V	Optional Breaker:	20/25/30/32A
Max Operation Voltage:	600V	Number Of Inverter MPPTs:	2
Connector:	Cable Gland input & output	Output strings:	2
Lightning Protection:	20-40kA 5/20µs	Max input string:	2



WHE DIB II IO 600 X			
AC Breaker:	2P 32A MCB for 7kw (Default); 2P 63A MCB for 14kw (Optional)		
RCD:	1P+N 32A 30mA (Default); 63A (Optional)	SPD:	2P 20-40kA 275V~
Default Breaker:	15A DCI000V	Optional Breaker:	20/32/63A
Max Operation Voltage:	600V	Output strings:	1
Connector:	Cable Gland input & output	Max input string:	1
Lightning Protection:	20-40kA 5/20µs		



WHE DIB 2I 2O 600 X			
AC Breaker:	2P 32A MCB for 7kw (Default); 2P 63A MCB for 14kw (Optional)		
RCD:	1P+N 32A 30mA (Default); 63A (Optional)	SPD:	2P 20-40kA 275V~
Default Breaker:	15A DCI000V	Optional Breaker:	20/32/63A
Max Operation Voltage:	600V	Number Of Inverter MPPTs:	2
Connector:	Cable Gland input & output	Output strings:	2
Lightning Protection:	20-40kA 5/20µs	Max input string:	2



WHE DIB II IO 600 X			
AC Breaker:	4P 32A MCB for 12kw (Default); 2P 63A MCB for 24kw (Optional)		
AC SPD:	2P 20-40kA 275V~	Phase:	Single Phase
Default Breaker:	15A DCI000V	Optional Breaker:	20/32/63A
Max Operation Voltage:	600V	Number Of Inverter MPPTs:	1
Connector:	Cable Gland input & output	Output strings:	1
Lightning Protection:	20-40kA 5/20µs	Max input string:	1



WHE DIB 2I 2O 1000 X			
AC Breaker:	4P 32A MCB for 12kw (Default); 2P 63A MCB for 24kw (Optional)		
AC SPD:	4P 20-40kA 275V~	Phase:	Triple Phase
Default Breaker:	1000V	Optional Breaker:	20/32/63A
Max Operation Voltage:	600V	Number Of Inverter MPPTs:	2
Connector:	Cable Gland input & output	Output strings:	2
Lightning Protection:	20-40kA 5/20µs	Max input string:	1



WHE DIB II IO 600 X			
AC Breaker:	4P 32A MCB for 12kw (Default); 2P 63A MCB for 24kw (Optional)		
RCD:	3P+N 32A 30mA (Default); 63A (Optional)	SPD:	4P 20-40kA 420V~
Default Breaker:	15A DCI000V	Optional Breaker:	20/32/63A
Max Operation Voltage:	600V	Output strings:	1
Connector:	Cable Gland input & output	Max input string:	1
Lightning Protection:	20-40kA 5/20µs		



WHE DIB 2I 2O 1000 X			
AC Breaker:	4P 32A MCB for 12kw (Default); 2P 63A MCB for 24kw (Optional)		
RCD:	3P+N 32A 30mA (Default); 63A (Optional)	SPD:	4P 20-40kA 420V~
Default Breaker:	15A DCI000V	Optional Breaker:	20/32/63A
Max Operation Voltage:	1000V	Output strings:	2
Connector:	Cable Gland input & output	Max input string:	2
Lightning Protection:	20-40kA 5/20µs		



WHE DIB 2I 2O 600 X			
AC Breaker:	2P 63A MCB for 14kw (Default)	RCD:	1P+N 63A 30mA
AC SPD:	2P 20-40kA 275V~	Phase:	Single Phase
Voltage Protector:	63A 230V~	ATS:	2P 63A 230V~
Default Breaker:	15A DCI000V	Optional DC Breaker:	20-40kA 5/20µs
Max Operation Voltage:	600V	Number Of Inverter MPPTs:	2
Connector:	MC4 input & Cable gland output	Output Strings:	2
Lightning Protection:	20-40kA 5/20µs	Max input string:	2



WHE DIB II XO 400 A			
AC Breaker:	2P 32A (Default); 2P 16/40/63A (Optional)	Phase:	Single Phase
RCD:	1P+N 32A 30mA (Default); 63A (Optional) 16A for 3.5kw/32A for 7kw/63A for 14kw		
Connector:	Cable gland input & output	Lightning Protection:	20-40kA 5/20µs



WHE DIB II XO 400 A			
AC Breaker:	2P 32A (Default); 2P 16/40/63A (Optional)	Phase:	Single Phase
RCD:	1P+N 32A 30mA (Default); 63A (Optional) 16A for 3.5kw/32A for 7kw/63A for 14kw		
Connector:	Cable gland input & output	Lightning Protect:	20-40kA 5/20µs



WHE DIB II 2O 400 A			
MTS:	2P 63A Automatic Transfer Switch	Phase:	Single Phase
RCD:	1P+N 63A 30mA (Default)	Lightning Protection:	20-40kA 5/20µs
AC Breaker:	2P 63A (Default)x3; 1P 32A x2 16A for 3.5kw/32A for 7kw/63A for 14kw		



WHE DIB II 2O 400 A

MTS:	2P 63A Automatic Transfer Switch	Phase:	Single Phase
RCD:	1P+N 63A 30ma (Default)	Lightning Protection:	20-40kA 5/20µs
AC Breaker:	2P 63A (Default)×3; 1P 32A×2		
	16A for 3.5kw/32A for 7kw/63A for 14kw		



WHE DIB II 1O 400 A

Contactor:	2P 25A 230V~ 2NO/4P 32A 400V~4NO	Input:	1 String
Max Voltage:	400V~	Output:	1 String
AC Breaker:	2P 32A 230V~		
Protection Rating:	IP65		



WHE DIB II 3O 400 A

Contactor:	2P 25A 230V~ 2NO×2	Input:	1 String
Max Voltage:	400V~	Output:	3 String
AC Breaker:	3P 32A 230V×2/1P 32A 230V×1	Max Current Output:	32A
Protection Rating:	IP65		



WHE DIB PV 4I 1O 400 A

Rated Voltage:	400/480/690V~	Phase:	Single Phase
Input:	4 Strings	Lightning Protection:	20-40kA 5/20µs
AC SPD:	4P 20-40kA 385V~	Installation:	Wall Mounting
Protection Rating:	IP65		



WHE DIB PV 6I 1O 400 A

Rated Voltage:	400/480/690V~	Rated Current Per Input:	0-250A
Input:	6 Strings	Output:	1 String 100-1250A
AC SPD:	4P 20-40kA 385V~	Installation:	Wall Mounting
Protection Rating:	IP65		